



**Peter Barry**  
*working harder for you*

Tel: 020 8360 4777  
[www.pbea.co.uk](http://www.pbea.co.uk)



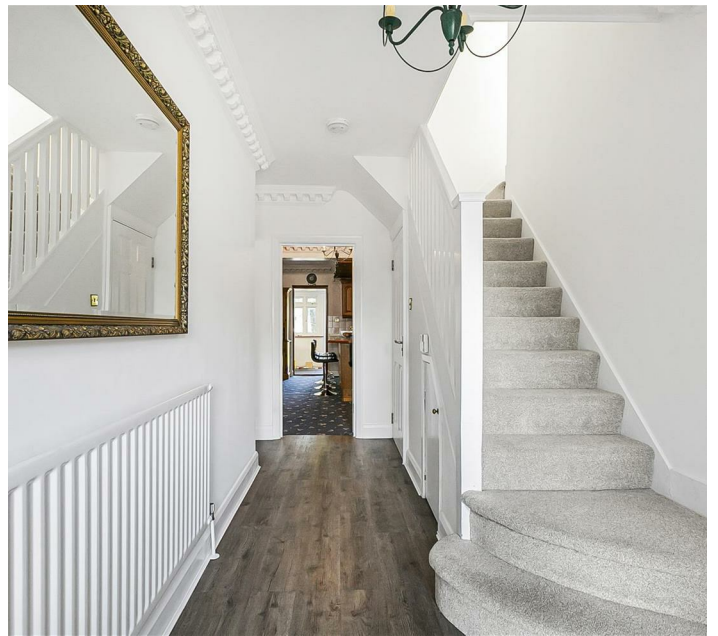
## Church Street, London, N9 9HS

Peter Barry are delighted to offer this wonderful Four double bedroom semi detached family residence situated perfectly for local schools and transport.

This stunning home boasts four double bedrooms, two bathroom, integral garage, conservatory, guest cloakroom plus potential to extend further in the future.

- Four double bedrooms
- Integral garage
- Master bedroom with en suite
- 1.1 miles to the station
- Good catchment for local schools
- Multi car parking
- Local shops and transport facilities
- Extended to the side rear and loft

**£825,000**



Energy Efficiency Rating		Current	Potential
<i>Very energy efficient - lower running costs</i>			
(92 plus)	A		
(81-91)	B		79
(69-80)	C	67	
(55-68)	D		
(39-54)	E		
(21-38)	F		
(1-20)	G		
<i>Not energy efficient - higher running costs</i>			
<b>England &amp; Wales</b>		EU Directive 2002/91/EC 